

PTTG2 Antibody (Center)
Affinity Purified Rabbit Polyclonal Antibody (Pab)
Catalog # AP16911c

Specification

PTTG2 Antibody (Center) - Product Information

Application	IF, WB,E
Primary Accession	O9NZH5
Other Accession	NP_006598.2
Reactivity	Human
Host	Rabbit
Clonality	Polyclonal
Isotype	Rabbit IgG
Calculated MW	22302
Antigen Region	56-84

PTTG2 Antibody (Center) - Additional Information

Gene ID 10744

Other Names

Securin-2, Pituitary tumor-transforming gene 2 protein, PTTG2

Target/Specificity

This PTTG2 antibody is generated from rabbits immunized with a KLH conjugated synthetic peptide between 56-84 amino acids from the Central region of human PTTG2.

Dilution

IF~~1:10~50

WB~~1:2000

E~~Use at an assay dependent concentration.

Format

Purified polyclonal antibody supplied in PBS with 0.09% (W/V) sodium azide. This antibody is purified through a protein A column, followed by peptide affinity purification.

Storage

Maintain refrigerated at 2-8°C for up to 2 weeks. For long term storage store at -20°C in small aliquots to prevent freeze-thaw cycles.

Precautions

PTTG2 Antibody (Center) is for research use only and not for use in diagnostic or therapeutic procedures.

PTTG2 Antibody (Center) - Protein Information

Name PTTG2

Cellular Location

Cytoplasm. Nucleus.

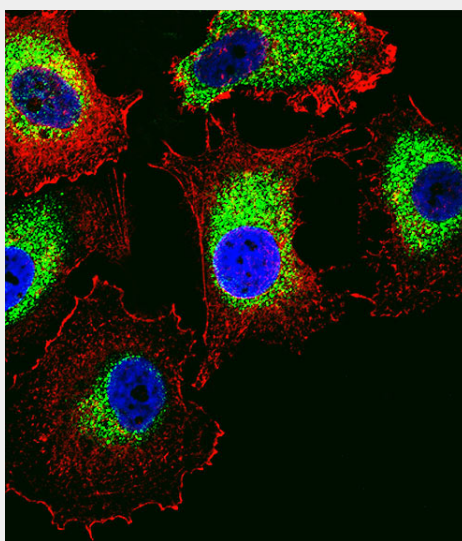
Tissue Location

Expressed at low levels in the pituitary, liver, spleen, prostate, testis, ovary, small intestine and colon. Also expressed in various pituitary, testicular, liver and ovarian tumors

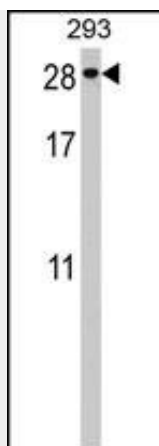
PTTG2 Antibody (Center) - Protocols

Provided below are standard protocols that you may find useful for product applications.

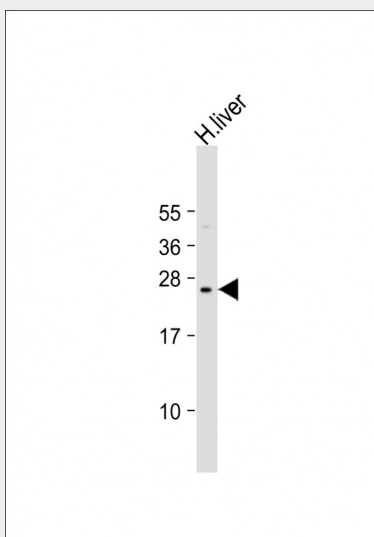
- [Western Blot](#)
- [Blocking Peptides](#)
- [Dot Blot](#)
- [Immunohistochemistry](#)
- [Immunofluorescence](#)
- [Immunoprecipitation](#)
- [Flow Cytometry](#)
- [Cell Culture](#)

PTTG2 Antibody (Center) - Images

Fluorescent confocal image of MCF-7 cell stained with PTTG2 Antibody (Center)(Cat#AP16911c). MCF-7 cells were fixed with 4% PFA (20 min), permeabilized with Triton X-100 (0.1%, 10 min), then incubated with PTTG2 primary antibody (1:25, 1 h at 37°C). For secondary antibody, Alexa Fluor® 488 conjugated donkey anti-rabbit antibody (green) was used (1:400, 50 min at 37°C). Cytoplasmic actin was counterstained with Alexa Fluor® 555 (red) conjugated Phalloidin (7 units/ml, 1 h at 37°C). Nuclei were counterstained with DAPI (blue) (10 µg/ml, 10 min). PTTG2 immunoreactivity is localized to Cytoplasm significantly.



PTTG2 Antibody (Center) (Cat. #AP16911c) western blot analysis in 293 cell line lysates (35ug/lane). This demonstrates the PTTG2 antibody detected the PTTG2 protein (arrow).



Anti-PTTG2 Antibody (Center) at 1:2000 dilution + human liver lysate Lysates/proteins at 20 µg per lane. Secondary Goat Anti-Rabbit IgG, (H+L), Peroxidase conjugated at 1/10000 dilution. Predicted band size : 22 kDa Blocking/Dilution buffer: 5% NFDm/TBST.

PTTG2 Antibody (Center) - References

Chen, L., et al. Gene 248 (1-2), 41-50 (2000) :
 Prezant, T.R., et al. J. Clin. Endocrinol. Metab. 84(3):1149-1152(1999)

PTTG2 Antibody (Center) - Citations

- [Pituitary tumor transforming gene PTTG2 induces psoriasis by regulating vimentin and E-cadherin expression.](#)